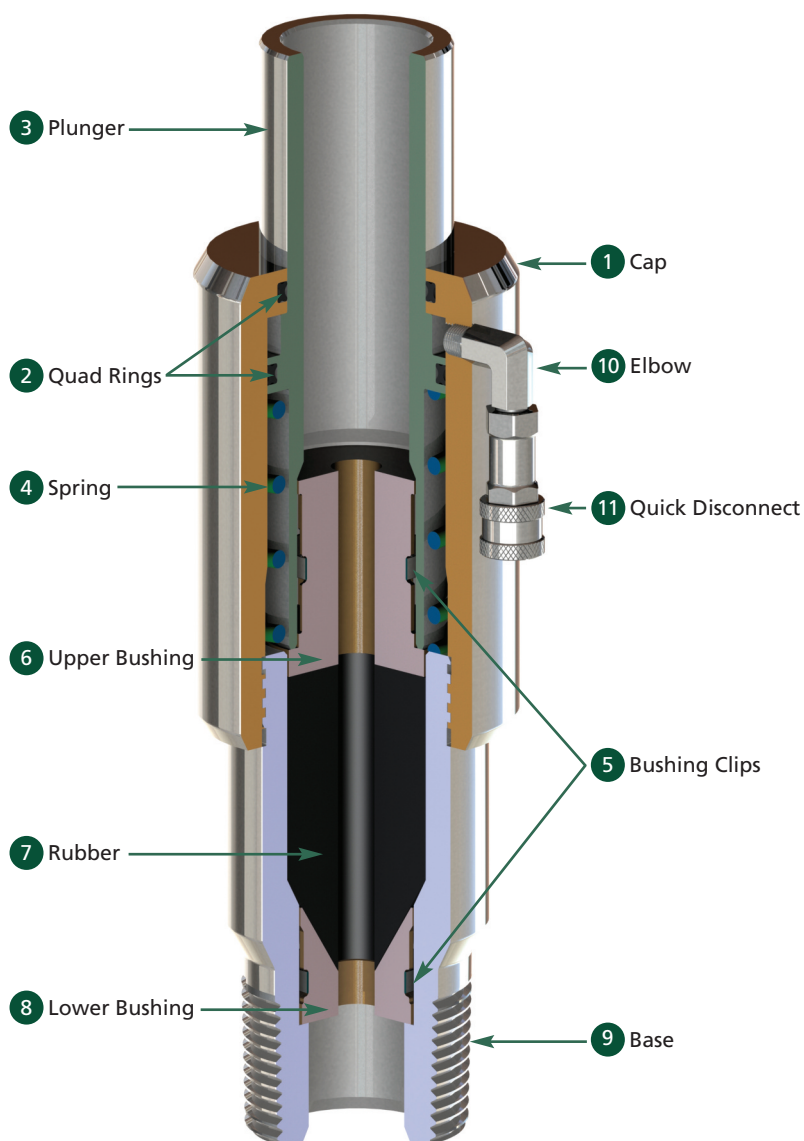


Securing wells for more than 90 years.



# Specification Sheet

## Type CL Oil Saver



### Key Features

- Relatively light weight design allows for easy handling.
- Field replaceable rubber and bushings to reduce operating costs.
- Larger bore allows bigger tools to pass through packoff.

### Key Rubber Properties

Temperature Range	Rubber Material
-40 to 180°F	45-Duro Natsyn

### Type CL Oil Saver

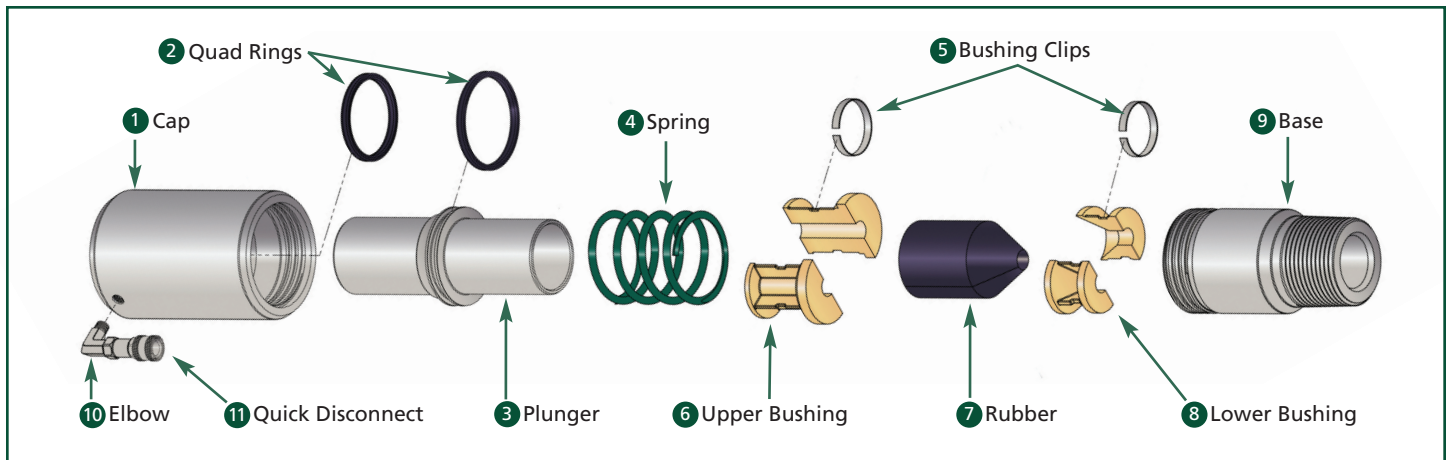


### Popular Type CL Oil Savers\*

Height (in.)	Wireline Size (in.)	Thread (in.)	Service	Working Pressure (PSI)	Model Number	Weight (lbs.)
15-1/2	7/32, 5/16	2-7/8 EU	Standard	5,000	03-02950	29
15-1/2	Up to 1-3/4	3-1/2 (OD) LP	Standard	5,000	03-02900	29

\*Double E has numerous Oil Saver models with other thread and rubber sizes and flange configurations. Contact a Double E representative for your specific requirements. If we don't have an Oil Saver model for your application, we can develop one for you.

# Replacement Parts for Popular Type CL Oil Saver Models



**Type CL Oil Saver Main Components**

Item	Description	Quantity	Part Number
1	Cap	1	03-09100
2	Quad Rings	2	03-09800
3	Plunger	1	03-09300
4	Spring	1	03-09600
5	Upper Bushing Clip, Small	1	03-10360
	Lower Bushing Clip, Large		03-10365
6	Upper Bushing	1	See Below
7	Rubber	1	See Below
8	Lower Bushing	1	See Below
9	Base (2-3/8" EU)	1	03-08625
	Base (2-7/8" EU)		03-08650
10	Elbow	-	-
11	Quick Disconnect	-	-

**Type CL Oil Saver Bushing & Rubber Components**

Size (in.)	Upper Bushing	Rubber	Lower Bushing
7/16	03-09480	03-04000	03-09440
3/8	03-09475	03-03950	03-09435
5/16	03-09475	03-03900	03-09435
1/4	03-09470	03-03850	03-09430
7/32	03-09470	03-03800	03-09430

⚠ This brochure is intended as a guideline and reference. Appropriate testing and validation by users having technical expertise is necessary for proper use of Double E products.



Double E, Inc., 1261 Profit Drive, Dallas, Texas 75247  
214-631-2290 Fax 214-630-4712 [www.doubleeinc.com](http://www.doubleeinc.com)